



umano medical

MAX-SECURE™ PLATFORM BED SERIES

MAX-SECURE PLATFORM BED*

*Support Surface sold separately



Seamless Smooth Surfaces are easy to clean and disinfect, benefiting infection prevention protocols.

Manufactured using **Herculite Polymer Composite**, the Max-Secure Platform Bed Series is **durable** and will **withstand continuous use** in healthcare environments.

Combine with the  **ook snow** ^{MH} behavioral health bed to meet all your patient safety and clinical needs.

KEY FEATURES

- Maintenance-free, one-piece construction
- Rounded corners ensure safety and reduce the possibility of self-harm
- Herculite Polymer Composite is anti-microbial, impact resistant, and will not produce toxic fumes
- Pick-proof perimeter sealant forms an impenetrable barrier
- No space for concealment
- Can be wall-mounted, corner-mounted or free-standing
- 10-year warranty when installed by our trained technicians

OPTIONAL CONFIGURATIONS

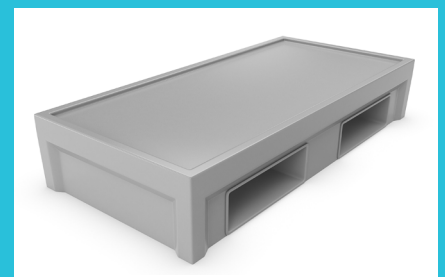
MAX-SECURE PLATFORM BED WITH 8 OR 12-POINT RESTRAINTS allows straps to be quickly inserted and tied down



MAX-SECURE PLATFORM BED WITH RESTRAINT BARS for a versatile multipoint restraint system



MAX-SECURE PLATFORM BED WITH DOUBLE STORAGE POCKETS for extra patient personal storage space



PRODUCT COLORS

STANDARD COLORS

The Platform Bed Series is offered in calm colors to help ease the minds of patients and contribute to a more serene environment.



C101
Ash Gray

C117
Desert Sand

C104
Russet Brown

OPTIONAL COLORS*

*Delivery lead times may vary.
Minimum quantities may apply.



C109
Forest Green

C113
Steel Blue

TECHNICAL SPECIFICATIONS

Bed Dimensions	40.5" W x 84.5" L x 16" H			
Weight Capacity	1060 lb (480.8 kg)			
Bed Weight	Max-Secure Platform Bed	190 lb (86 kg)		
	Max-Secure Platform Bed with Storage	190 lb (86 kg)		
	Max-Secure Platform Bed with 8 or 12-Point Restraints	190 lb (86 kg)		
	Max-Secure Platform Bed with Restraint Bars	196 lb (88 kg)		
Bed Options	Double Storage Pockets (2)	Each: 25" D x 8" H x 11" L		
	Restraints Points (8 or 12)	4 restraint points located on each side of the bed		
		2 restraint points located at foot end and head end of the bed 3.5" W x 2.5" H, with a 2-inch curved back depth		
	Restraint Bars (2 or 4)	Short bars (at foot and head of bed): 23" L x 3/4" diameter Long bars (on each side of the bed): 67 3/8" L x 3/4" diameter		
Optional Support Surface	Free-standing bed with fully enclosed bottom			
	Featuring a nylon, 4 way stretch polyurethane, or vinyl (on comfortNEST yellow only), and fully enclosed cover with no zippers, no flaps, and no handles for enhanced patient safety.			
	Dimensions	35" W x 80" L x 6" H		
	Models	comfortnest yellow _{MH}	comfortnest blue _{MH}	comfortnest green _{MH}
Flammability	California No.133 UL1056 ASTM E1537	Flammability Test Procedure for Seating Furniture for use in Public Occupancies Fire Test of Upholstered Furniture Test Method for Fire Testing of Upholstered Furniture		
Installation	No exposed fasteners, structural adhesive mounting system, and perimeter pick proof sealant. Refer to complete installation instructions or get a quote for installation by our trained technicians.			
Warranty	10 years on products and 10 years on installation when installed by our trained technicians.			

Specifications can change without notice.



Umano Medical Inc.
230, boulevard Nilus-Leclerc
L'Islet QC G0R 2C0 CANADA
Toll Free: 1 844 409-4030
information@umanomedical.com
umanomedical.com

Umano Medical is the authorized distributor for the MAX-SECURE PLATFORM BED SERIES
Manufactured by Max-Secure Systems Inc.